

## AODA Mouse Pointer Visibility

### Mouse Pointer Visibility

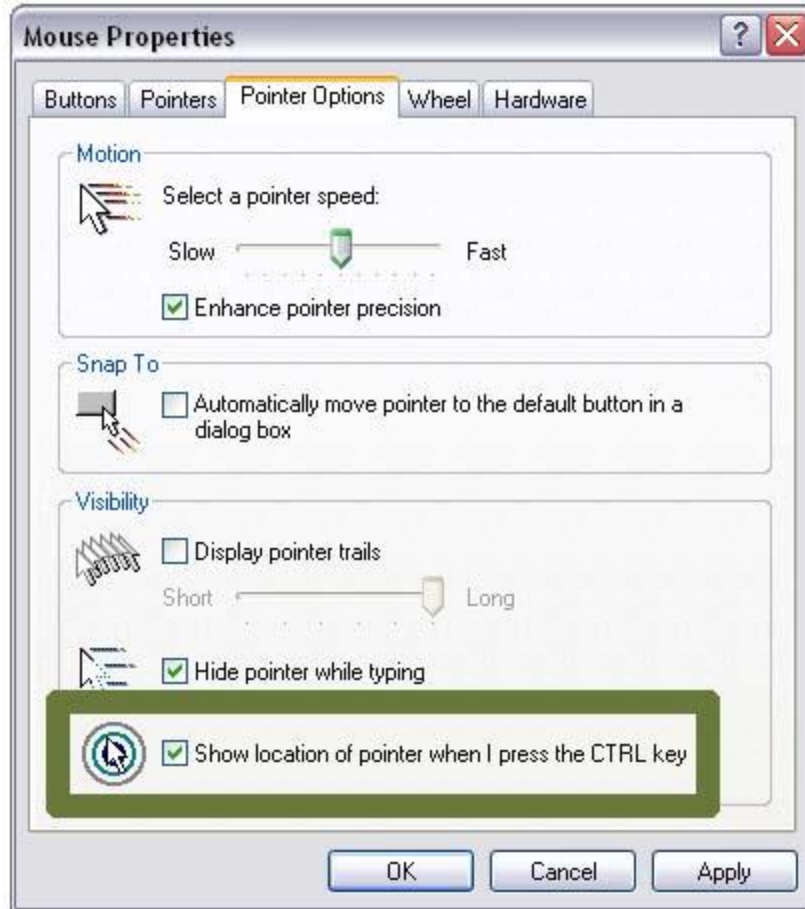
Helpful if you have trouble viewing the mouse pointer.

#### Microsoft Windows based computers.

#### Windows XP

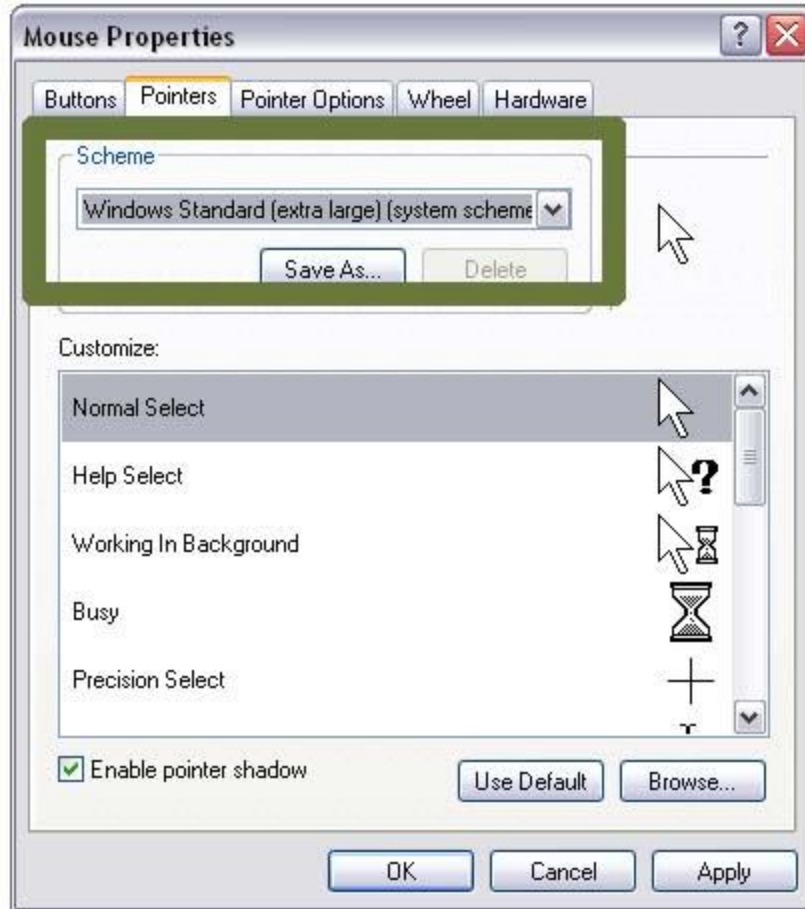
#### Find the pointer

1. Click the **Start** button or press the **Windows** logo key on your keyboard.
2. Open the **Control Panel**. Click on **Control Panel** or press **C** on your keyboard and it will pop up.
3. Open the **Mouse Properties**. Double-click the **Mouse** icon or press **M** until the Mouse icon is highlighted and press **Enter**. The **Mouse** window will pop up.
4. Click the **Pointer Options** tab, or press **Ctrl** and **Tab** until the Pointer Options tab comes to the front.
5. Click the checkbox that says "**Show location of pointer when I press the CTRL key**" or press **Alt** and **S** on the keyboard to check the box.
6. To confirm your choice and exit **Mouse Properties** press **Enter** on your keyboard or click the **OK** icon.
7. From here on in, press **CTRL** on the keyboard when you cannot find the mouse pointer. This will surround it with circles to make it easier to find.



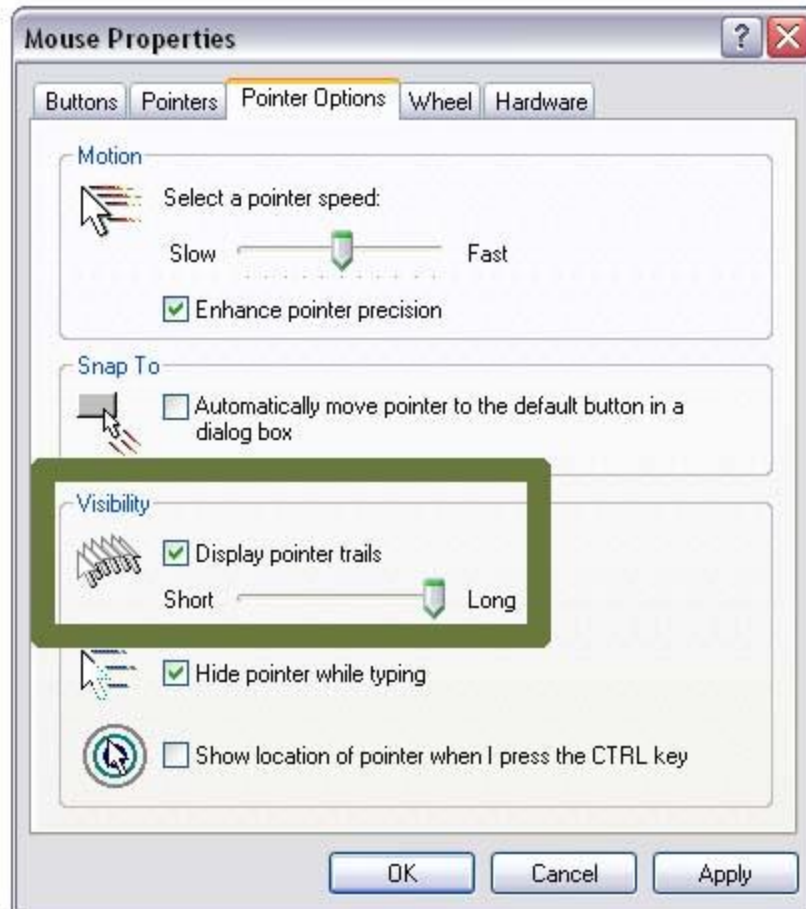
## Make pointer larger

1. Click the **Start** button or press the **Windows** logo key on your keyboard.
2. Open the **Control Panel**. Click on **Control Panel** or press **C** on your keyboard and it will pop up.
3. Open the **Mouse Properties**. Double-click the **Mouse** icon or press **M** until the **Mouse** icon is highlighted and press **Enter**. The **Mouse** window will pop up.
4. Click the **Pointer** tab, or press **Ctrl** and **Tab** until the **Pointer** tab comes to the front.
5. Click the **Scheme** box, or press **Tab** until its drop-down menu is highlighted.
6. Use the up/down arrows on the keyboard to move through the list. The preview images will change to reflect the chosen scheme.
7. Choose a scheme. The best sets for visibility are labeled as **Large**, **Extra Large** or **Inverted**. Press **Enter** on your keyboard if it is already highlighted, or click on it with your mouse.
8. To exit the **Mouse Properties** press **Enter** on your keyboard or click the **OK** icon.



### Add trails to your pointer

1. Click the **Start** button or press the **Windows** logo key on your keyboard.
2. Open the **Control Panel**. Click on **Control Panel** or press **C** on your keyboard and it will pop up.
3. Open the **Mouse Properties**. Double-click the **Mouse** icon or press **M** until the Mouse icon is highlighted and press **Enter**. The **Mouse** window will pop up.
4. Click the **Pointer Options** tab, or press **Ctrl** and **Tab** until the **Pointer Options** tab comes to the front.
5. Click the checkbox that says **Display pointer trails** or press **Alt** and **D** on the keyboard.
6. To adjust the size of the pointer trails, drag the slider under **Display pointer trails** or press **Tab** until the slider bar is highlighted and use the left/right arrow keys to adjust.
7. To select this option and exit **Mouse Properties** press **Enter** on your keyboard or click the **OK** icon.



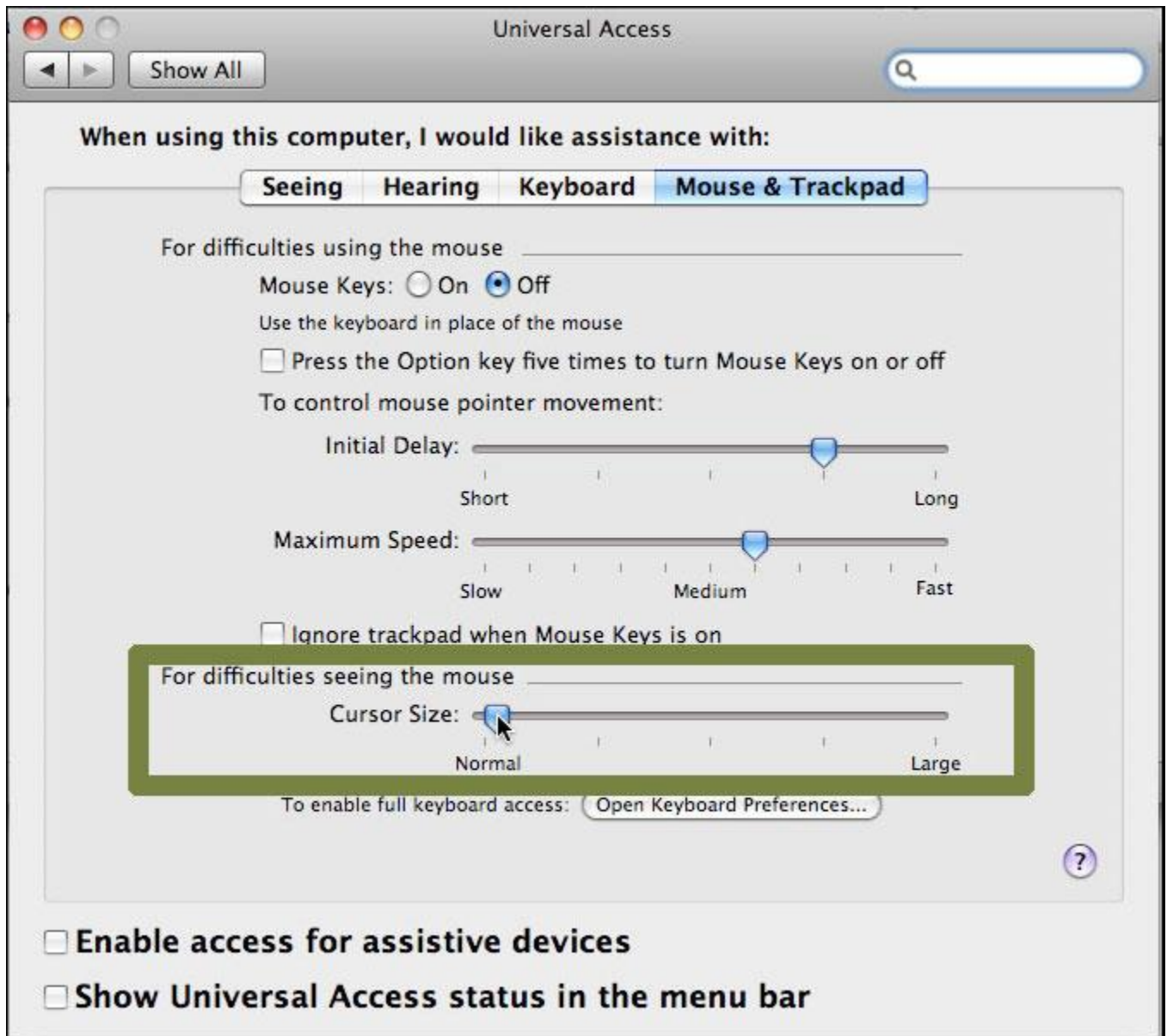
## Apple Macintosh OS X based computers.

### Apple OS X

#### Make Pointer Larger

1. Use your mouse to click on the **Apple** menu or press **Control** and **F2** and then press **Enter**.
2. Use your mouse to click on **System Preferences** or use the down arrow key to highlight **System Preferences** and then press **Enter**.
3. Use your mouse to click on the **Universal Access** icon or use the tab key repeatedly to highlight the **Universal Access** icon and then press the spacebar.
4. Use your mouse to click on the **Mouse** tab or press **Control** and **F7** and then the right arrow key to highlight the **Mouse** tab and then press the spacebar.
5. Use your mouse to click on the **Cursor Size** bar and move the bar to the right or left in order to change the size of the mouse pointer. Alternately, use the tab key repeatedly to highlight the **Cursor Size** bar and then the right and left arrow keys to increase or decrease the pointer size.

- When you are happy with your pointer size, use your mouse to click the red **Close** button at the top left of the **Universal Access** window or press **Command** and **W** to close the window.



### Slow down pointer speed

- Use your mouse to click on the **Apple** menu or press **Control** and **F2** and then press **Enter**.
- Use your mouse to click on **System Preferences** or use the down arrow key to highlight **System Preferences** and then press **Enter**.

3. Use your mouse to click on the **Keyboard & Mouse** icon or use the tab key repeatedly to highlight the **Keyboard & Mouse** icon and then press the spacebar.
4. Use your mouse to click on the **Mouse** tab or press **Control** and **F7** and then the right arrow key to highlight the **Mouse** tab and then press the spacebar.
5. Use your mouse to click on the **Tracking Speed** bar and move the bar to the right or left in order to change the speed of the mouse pointer. Alternately, use the tab key repeatedly to highlight the **Tracking Speed** bar and then the right and left arrow keys to change the speed of the pointer.
6. When you are happy with your pointer speed, use your mouse to click the red **Close** button at the top left of the **Keyboard & Mouse** window or press **Command** and **W** to close the window.

